

PolarPlus+

120W ETFE 3-delt solcellepanel med 2x USB lader (MPPT)



PolarPlus solcellepaneler med halv-celler (15-20% større ytelse)

Monokrystallinske halv-celler er forskjellig fra tradisjonelle solpaneler som har hele monokrystallinske celler



Halv-celler er mer fleksible og har mindre indre motstand noe som gir høyere kraftproduksjon og mindre varme

Halv-celler (shingled) gir 15-20% større ytelse når panelet bøyd/skyggebelagt enn tradisjonelle solcellepaneler

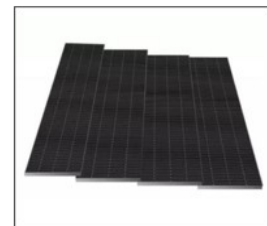
Solcellepaneler med ETFE overflate har bedre beskyttelse og oppnår lengere levetid.

Solcellepaneler beskyttet med glass i ramme oppnår lengst levetid.

Solcellepanelene er godt egnet for bruk i til hytte, båt, bobiler m.m.

Specification	PP100MFE	Accessories
Mechanical Data	Standard Test Conditions AM=1.5, E=1000W/m ² , TC=25°C	<p>Quick Connect System (QCS)</p>  <p>Bluetooth</p> 
Nominal Power	120W	
Cell type	Monocrystalline	
Cell Efficiency	22,72 %	
Maximum Power current(Imp)	5.58A	
Maximum Power Voltage(Vmp)	21,52V	
Open-circuit Voltage(Voc)	25,68V	
Short-circuit Current(Isc)	6,02A	
Output tolerance	+3%	
Cable	1000mm / 2.5mm ²	
Output 1: 5521 Female	21,5V (MC4 and QCS Compatible)	
Output 2: MPPT USB-A	5V2A	
Output 3: MPPT USB-C	5V3A	
Working Temperature	-40°C~+80°C	
Dimension, folded	540x450x45mm	
Dimension, unfolded	540x1620mm	
Weight	4,5kg	
Product warranty	2 years	

	Conventional Panel	Shingled Panel	Sunpower Panel
EFFICIENCY OF PANEL	average	very good	poor
BENDING ANGLE	<30°	>40°	<30°
HOT-SPOT RESISTANCE	higher	very lower	average
SHADOW EFFECT	higher	very lower	average
MECHANICAL LOAD TEST	poor	very good	average
CELLS CRACK	higher	very lower	lower
APPEARANCE	average	good	good



Shingled arrangement without gaps



Ordinary panels arrangement has a lot of gaps